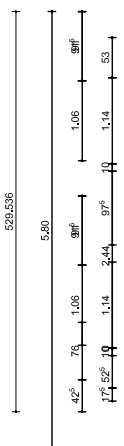
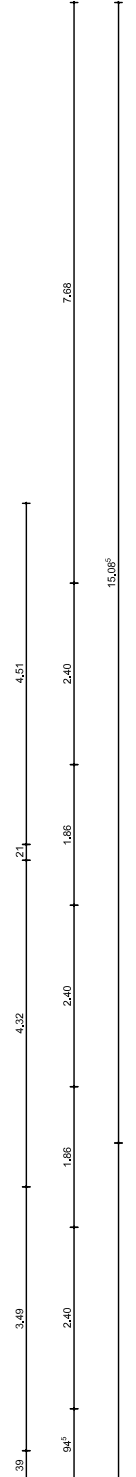
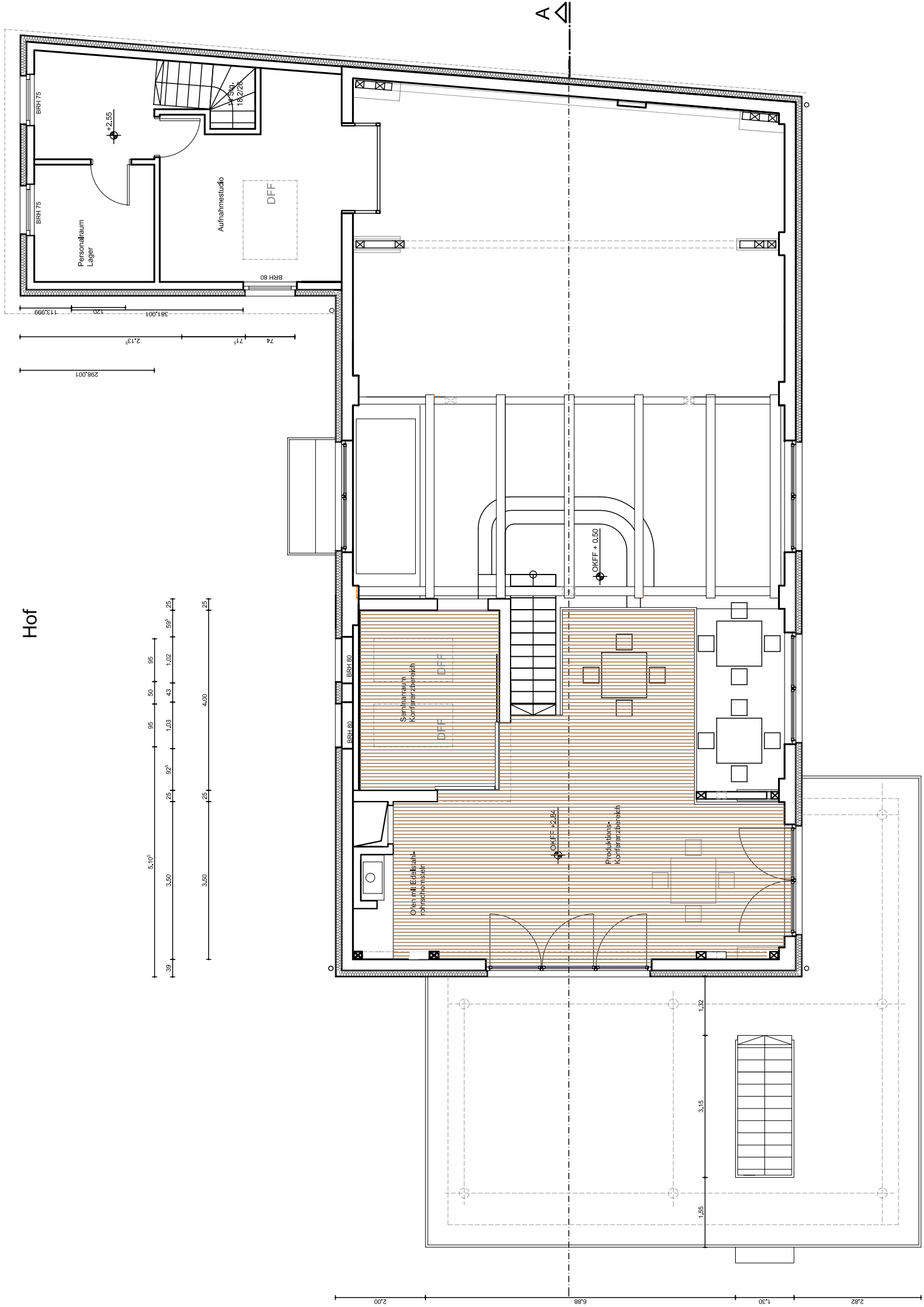
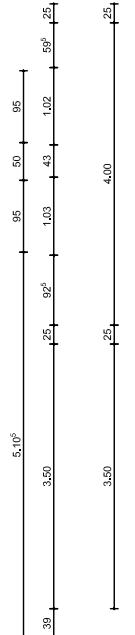


# GRUNDRISS OBERGESCHOSS

V 2.1  
G



Hof



Bauvorhaben:	Umbau Scheune
Bauherr:	Winkelteich 4 14827 Wiesenburg/Mark
Architekt:	Dipl.-Ing. Architekt Uwe Knörck Welsigke 2/3 14827 Wiesenburg/Mark Tel. 033849 - 51798 Fax 033849 - 90964
Plan:	Konzept
Maßstab:	1 : 100
Format:	A 3
Datum:	Okt.2010
Datei/Gez.:	Winkelteich_4_A-Planung.dwg